



OUR SENIOR PASTOR



Rev. Mark A. Whittaker became Pastor of First United Methodist Church, Homosassa, 7 years ago after serving as pastor of churches in Winter Haven, Margate, Ocala, Mulberry, Miami Beach, and Leesburg. He was ordained in 1971 after receiving his M.Div. degree from Candler Theological Seminary at Emory University in Atlanta. Pastor Mark and his wife, Iris, have two adult children: Kimberly, a teacher who lives in Orlando, and Marshall, who lives in Connecticut since recently graduating from college.

Pastor Mark has said how much he enjoys being here. "I am thrilled to be part of this vibrant congregation of God's people who are engaged, in so many ways, in carrying on the mission and ministry of Jesus Christ." His enthusiasm shows! Just watch him "in action" on Sunday morning, where he obviously enjoys preaching God's Word and leading God's people in worship.

PASTORAL MINISTRY AND SERVICES

Besides giving general supervision and consultative leadership to the staff and to many of the programs and ministries of the church, Pastor Whittaker is available to individuals and families in the following ways:

Crisis Counseling. Pastor Whittaker, or another staff member, is available in crisis situations and will suggest further community resources if needed.

Hospital Visitation. Pastor Whittaker regularly visits in local hospitals. Members and friends need to notify the church office when they, or a member of their family, are hospitalized.

Nursing Homes and Home Bound. Our Parish Visitor Committee calls regularly on these members. Pastor Whittaker visits by request as he is able.

Home Visits. Pastor Whittaker will be glad to make a pastoral visit to your home. It is best to make a specific request and set a convenient time when you will be at home.

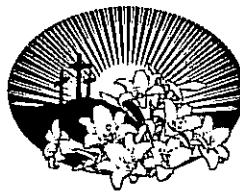
Children's Baptism. Parents who wish to present their children for the Sacrament of Baptism should plan to meet with Pastor Whittaker in preparation for the Baptism.

Marriage. Couples should schedule well in advance to meet with Pastor Whittaker and the Wedding Coordinator in preparation for the wedding ceremony.

Death. At the time of the death of a family member, Pastor Whittaker appreciates being called so he may be available to help during this difficult period of loss and to plan an appropriate funeral or memorial service.

WE'RE GLAD YOU CAME!

If you are visiting us for the first time, **welcome!** Come again. If you have visited us before and are back again, **thanks for coming!** And if you are a member or regular friend of the church, it's always good to see you, and **we're glad you're here!** We feel like "family" to each other and we are delighted to welcome you to this "family of God," where we love and serve the Lord Jesus Christ—as the people of the United Methodist Church.

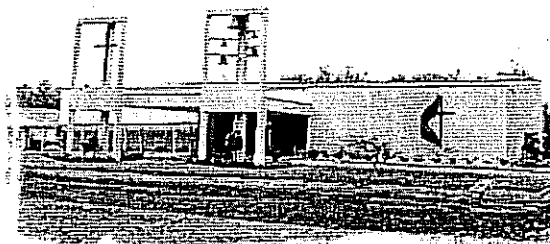


Happy Easter

An Easter Supplement to Genesis
(Our monthly newsletter)

March 23, 2008

Welcome to our special Easter Services. Worship is always significant at Homosassa First United Methodist Church and Easter is the most important time in the church calendar. We welcome everyone and pray that all will realize afresh the importance of Christ's sacrifice on our behalf. We encourage regular worship and study and offer a variety of opportunities for Christians. Come and join us as we study and serve together.



First United Methodist Church
8831 W. Bradshaw Street, Homosassa, Florida 34448
Phone: 352-628-4083
Website: www.lumc.org
Rev. Mark A. Whittaker, Pastor
Theresa Weber, Administrator
Patience Nave, Dir. of Christian Education & Ministries
Neretta Brobst, Youth Coordinator
Sandra Tam, Nursery Supervisor
Sharon Smith, Parish Nurse & Director of Visitation
Mary Kay Messenger, Director of Music Ministries
Joy Potts, Organist/Pianist
Dayna Middlebrooks, Asst. Organist/Pianist
Sandy Dewart, Bookkeeper
Dale Evans, Custodian
Michael Rogers, Night Security
Sharon Cooley, Sound Technician

Our church office is open weekdays from 8:30 am to Noon and from 1:00 to 4:30 pm and usually closed on federal holidays.

OUR WORSHIP SERVICES

We offer three services of worship each Sunday morning:
8:00 am—Traditional worship with special music in the Worship Center.
9:30 & 11:00 am—Traditional worship with the full choir in the Worship Center.
(Child care for infants & toddlers at all Sunday services).

EBADOC DISCIPLSHIP ACADEMY

Every Sunday classes and groups offer learning opportunities for all ages.

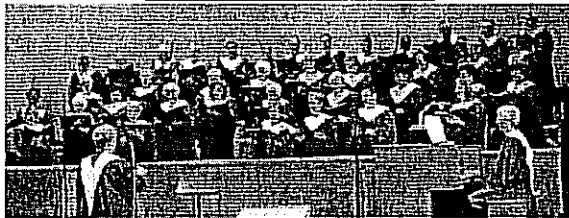
Pre-School, where infants care and pre-schoolers hear about Jesus and develop creativity.

Children (K-5), where dedicated leaders teach children about God's love (9:30-10:30 am) using the most current resources and teaching methods.

Youth (Middle & High School), where youth get answers to their difficult questions about the bible, Jesus and relate their faith to their everyday lives as young Christians.

Adults, where new members are always welcome. Regular Bible study groups meet weekly and short-term groups meet periodically for Bible study, prayer, and Christian growth.

Vacation Bible School. During the summer, we offer a week long vacation church school for children, where they learn about Jesus and his way of love.

OUR MUSIC MINISTRY

Chancel Choir. This great group of singers rehearses on Wednesday at 7:00 pm and provides regular music for the 9:30 & 11:00 am Sunday worship services.

Hand Bell Choir. The bell ringers rehearse on Wednesdays at 5:45 pm and present music occasionally at the three traditional worship services on Sunday morning.

Instrumental music. Some talented instrumentalists, including harpists, rehearse periodically and play for Sunday mornings and special events

Sacred Dancers. This inter-generational group prepares and performs interpretive dance presentations occasionally on Sundays and for seasonal worship services and programs.

SOME OF OUR OUTREACH MINISTRIES

World-wide. As a church we contribute about \$80,000 a year to missions on nearly every continent.

Closer to Home. We support a number of important ministries in our state. One of the most significant is The Florida United Methodist Children's Home & Habitat For Humanity.

Thrift Shop. Due to construction of phase three of our building project, the thrift shop is closed. This valuable service will resume providing clothing and household goods at low costs to the community once renovations are complete.

Food Pantry & Holiday Food Baskets. We collect and distribute over 600 bags of groceries and 100 holiday gift baskets annually to local families.

SHARE. This food-buying cooperative offers top quality meats, fish, fowl, staples, and produce at bargain prices to all who participate in the monthly program.

STEPHEN MINISTRY

These one-on-one Christian care-givers minister confidentially to those in crisis situations. They reach out in times of loneliness, depression, illness, hospitalization, grief, problems, becoming new parents, and in other times of stress during life's "journey." **Stephen Ministers** are not professional counselors. They are committed Christian lay persons who have dedicated their time and their gifts from God to be trained for this special and confidential ministry. Persons in

need of such a ministry may call the church office and request that a **Stephen Minister** contact them.

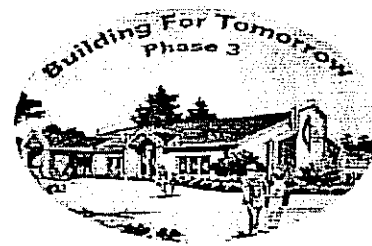
**FELLOWSHIP AND SERVICE GROUPS**

The United Methodist Women. All women are welcome in the UMW, which holds a quarterly program meeting. Small circle groups meet monthly. The UMW supports mission projects locally and around the world, largely through proceeds from the Thrift Shop.

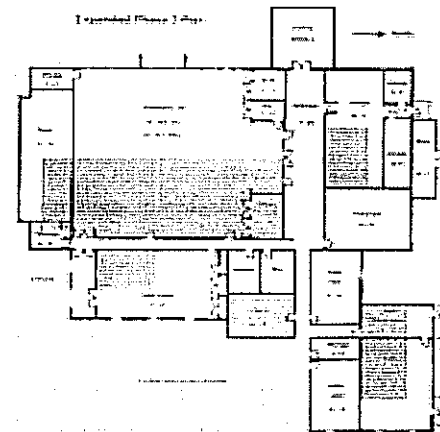
United Methodist Youth Fellowship. An inclusive ministry to those ages 11-19 with a blend of spiritual, social and service opportunities.

**CLOWNS KEEP US LAUGHING**

Our Clown Ministry brings the joy and laughter of being a Christian alive for people who might not otherwise have much to laugh about. The clowns become our ambassadors at occasional community functions, visit in local nursing homes, and enliven many church programs.

**WE'RE GROWING**

Yes, we're growing...and glad of it! Currently our membership numbers just over 800, with many additional church "friends" swelling our ranks. We may not be a 24/7 organization, but it's rare to drive by the church "campus" and not see cars in the parking lots. There's usually some-thing important going on! We are a congregation of all ages—young...old...and every age in between. Many of our programs are inter-generational and **we have a place for you!**

**AND WE'RE OUTGROWING**

Yes, that too! Although we enjoy the beautiful Worship Center, built just 15 years ago, we have outgrown some of the rest of our space. So, we are in the process of expanding our facilities. Several years ago, we completed construction of a new Education Center that includes up to date class-rooms, a computer lab and a chapel. The renovation and remodeling of our Administrative Center provides our staff with appropriate office and work space.

Before long, Phase III of our construction plan will be underway. This expansion will give us the kitchen and meeting hall space we need for our expanding population—and much-needed space for our youth.